

Entity-Relationship Model Intershop 7



Document ID:	ENF7-60-09-01
Version:	7.6.0.0
Publication Date:	2015-11-23
Cartridge:	bc_pmc

Notes:	DomainID <fk> columns reference to Domain.UUID (core)
	<pk> = primary key <fk..> = foreign key <ak..> = alternate key <i..> = indexed column
	<PersistentObject> _AV.OWNERID references to <PersistentObject>.UUID, see core for detailed column description of _AV tables.

These materials are subject to change without notice. These materials are provided by Intershop Communications AG and its affiliated companies ("Intershop Group") for informational purposes only, without representation or warranty of any kind, and Intershop Group shall not be liable for errors or omissions with respect to the materials. The only warranties for Intershop Group products and services are those that are set forth in the express warranty statements accompanying such products and services, if any. Nothing herein should be construed as constituting an additional warranty.

This document and all of its parts are protected by copyright. All rights, including those of duplication, reproduction, translation, microfilming, storage on electronic media and processing in electronic form are expressly reserved.

Intershop® and Enfinity™ are trademarks or registered trademarks of Intershop Communications AG. All other company, product and brand names are trademarks or registered trademarks of their respective owners.

Copyright© 2005-2014 Intershop Communications. All Rights Reserved.

PAGELETDEFINITIONCONSTRAINT

CONTAINERUUID	VARCHAR2(28 CHAR)	<pk,fk>	<i1,i2>	not null
DEFINITIONQUALIFIEDNAME	VARCHAR2(256 CHAR)	<pk>	<i1>	not null
RESOURCESETID	VARCHAR2(256 CHAR)			not null
OCA	NUMBER(11,0)			not null
LASTMODIFIED	TIMESTAMP (9)			not null

UUID = CONTAINERUUID

PAGELETCONSTRAINTCTNR

UUID	VARCHAR2(28 CHAR)	<pk>	<i>	not null
DOMAINID	VARCHAR2(28 CHAR)			not null
OCA	NUMBER(11,0)			not null
LASTMODIFIED	TIMESTAMP (9)			not null

UUID = PAGELETCONSTRAINTCTNRID

UUID = PAGELETCONSTRAINTCTNRID

UUID = CONTAINERUUID

PAGELETCONSTRAINT

CONTAINERUUID	VARCHAR2(28 CHAR)	<pk,fk1>	<i1,i2>	not null
PAGELETUUID	VARCHAR2(28 CHAR)	<pk,fk2>	<i1,i3>	not null
OCA	NUMBER(11,0)			not null
LASTMODIFIED	TIMESTAMP (9)			not null

constraint

UUID = PAGELETENTRYPOINTID

PAGELETENTRYPOINT_PCCA

UUID	VARCHAR2(28 CHAR)	<pk>	<i1>	not null
DOMAINID	VARCHAR2(28 CHAR)			not null
PAGELETENTRYPOINTID	VARCHAR2(28 CHAR)	<fk1>	<i2>	not null
PAGELETCONSTRAINTCTNRID	VARCHAR2(28 CHAR)	<fk2>	<i2>	not null
OCA	NUMBER(11,0)			not null
LASTMODIFIED	TIMESTAMP (9)			not null

PLACEHOLDERDEF_PCCA

UUID	VARCHAR2(28 CHAR)	<pk>	<i1>	not null
DOMAINID	VARCHAR2(28 CHAR)			not null
PLACEHOLDERDEFINITIONID	VARCHAR2(28 CHAR)	<fk2>	<i2>	not null
PAGELETCONSTRAINTCTNRID	VARCHAR2(28 CHAR)	<fk1>	<i2>	not null
OCA	NUMBER(11,0)			not null
LASTMODIFIED	TIMESTAMP (9)			not null

constraint.assignment

PAGELENTTRYPOINTRELATION

UUID	VARCHAR2(28 CHAR)	<pk>	<i2>	not null
DOMAINID	VARCHAR2(28 CHAR)	<ak>	<i1,i5>	not null
ENTRYPOINTID	VARCHAR2(28 CHAR)	<fk2>	<i1,i4>	not null
PARENTENTRYPOINTID	VARCHAR2(28 CHAR)	<ak,fk1>	<i3,i5>	not null
POSITION	FLOAT(126)	<ak>	<i5>	not null
OCA	NUMBER(11,0)			not null
LASTMODIFIED	TIMESTAMP (9)			not null

UUID = PARENTENTRYPOINTID

UUID = ENTRYPOINTID

PAGELENTTRYPOINT_PA

UUID	VARCHAR2(28 CHAR)	<pk>	<i1>	not null
DOMAINID	VARCHAR2(28 CHAR)	<ak>	<i4>	not null
PAGELETID	VARCHAR2(28 CHAR)	<fk1>	<i2>	not null
ENTRYPOINTID	VARCHAR2(28 CHAR)	<ak,fk2>	<i3,i4>	not null
VALIDFROM	TIMESTAMP (9)			null
VALIDTO	TIMESTAMP (9)			null
ONLINEFLAG	NUMBER(1,0)			null
POSITION	FLOAT(126)	<ak>	<i4>	not null
OCA	NUMBER(11,0)			not null
LASTMODIFIED	TIMESTAMP (9)			not null

pagelet.entrpoint.assignment

UUID = ENTRYPOINTID

UUID = OWNERID

PAGELENTTRYPOINT_AV

OWNERID	...	<pk,fk>	not null
NAME	...	<pk>	not null
LOCALID	...	<pk>	not null

PAGELENTTRYPOINT

UUID	VARCHAR2(28 CHAR)	<pk>	<i2>	not null
DOMAINID	VARCHAR2(28 CHAR)		<i1>	not null
ID	VARCHAR2(256 CHAR)		<i1>	not null
PAGEFLAG	NUMBER(1,0)			null
DYNAMICFLAG	NUMBER(1,0)			null
READONLYFLAG	NUMBER(1,0)			null
SORTINGFLAG	NUMBER(1,0)			null
DEFINITIONQUALIFIEDNAME	VARCHAR2(256 CHAR)			not null
RESOURCESETID	VARCHAR2(256 CHAR)		<i1>	not null
OCA	NUMBER(11,0)			not null
LASTMODIFIED	TIMESTAMP (9)			not null

UUID = PAGELENTTRYPOINTUUID

PAGELENTTRYPOINTLABELASSIGNMT

UUID	VARCHAR2(28 CHAR)	<pk>	<i1>	not null
DOMAINID	VARCHAR2(28 CHAR)			not null
PAGELENTTRYPOINTUUID	VARCHAR2(28 CHAR)	<fk1>		null
LABELUUID	VARCHAR2(28 CHAR)	<fk2>	<i2>	not null
OCA	NUMBER(11,0)			not null
LASTMODIFIED	TIMESTAMP (9)			not null

UUID = ENTRYPOINTID

PAGELENTTRYPOINTSARINGINFO

ENTRYPOINTID	VARCHAR2(28 CHAR)	<pk,fk>	<i1,i2>	not null
DOMAINID	VARCHAR2(28 CHAR)	<pk>	<i1>	not null
READONLYFLAG	NUMBER(1,0)			null
OCA	NUMBER(11,0)			not null
LASTMODIFIED	TIMESTAMP (9)			not null

pagelet.sharinginfo

USERGROUP_PA

UUID	VARCHAR2(28 CHAR)	<pk>	<i2>	not null
DOMAINID	VARCHAR2(28 CHAR)		<i1>	not null
PAGELETUUID	VARCHAR2(28 CHAR)	<fk>	<i1,i3>	not null
USERGROUPID	VARCHAR2(256 CHAR)		<i1>	not null
USERGROUPDOMAINID	VARCHAR2(28 CHAR)			not null
OCA	NUMBER(11,0)			not null
LASTMODIFIED	TIMESTAMP (9)			not null

UUID = PAGELETUUID

UUID = PAGELETID

UUID = PAGELETUUID

PAGELETLABELASSIGNMENT

UUID	VARCHAR2(28 CHAR)	<pk>	<i1>	not null
DOMAINID	VARCHAR2(28 CHAR)			not null
PAGELETUUID	VARCHAR2(28 CHAR)	<fk1>		null
LABELUUID	VARCHAR2(28 CHAR)	<fk2>	<i2>	not null
OCA	NUMBER(11,0)			not null
LASTMODIFIED	TIMESTAMP (9)			not null

UUID = LABELUUID

LABEL

UUID	VARCHAR2(28 CHAR)	<pk>	<i>	not null
DOMAINID	VARCHAR2(28 CHAR)			not null
NAME	VARCHAR2(200 CHAR)			null
USERID	VARCHAR2(28 CHAR)			null
OCA	NUMBER(11,0)			not null
LASTMODIFIED	TIMESTAMP (9)			not null

foundation.labeling

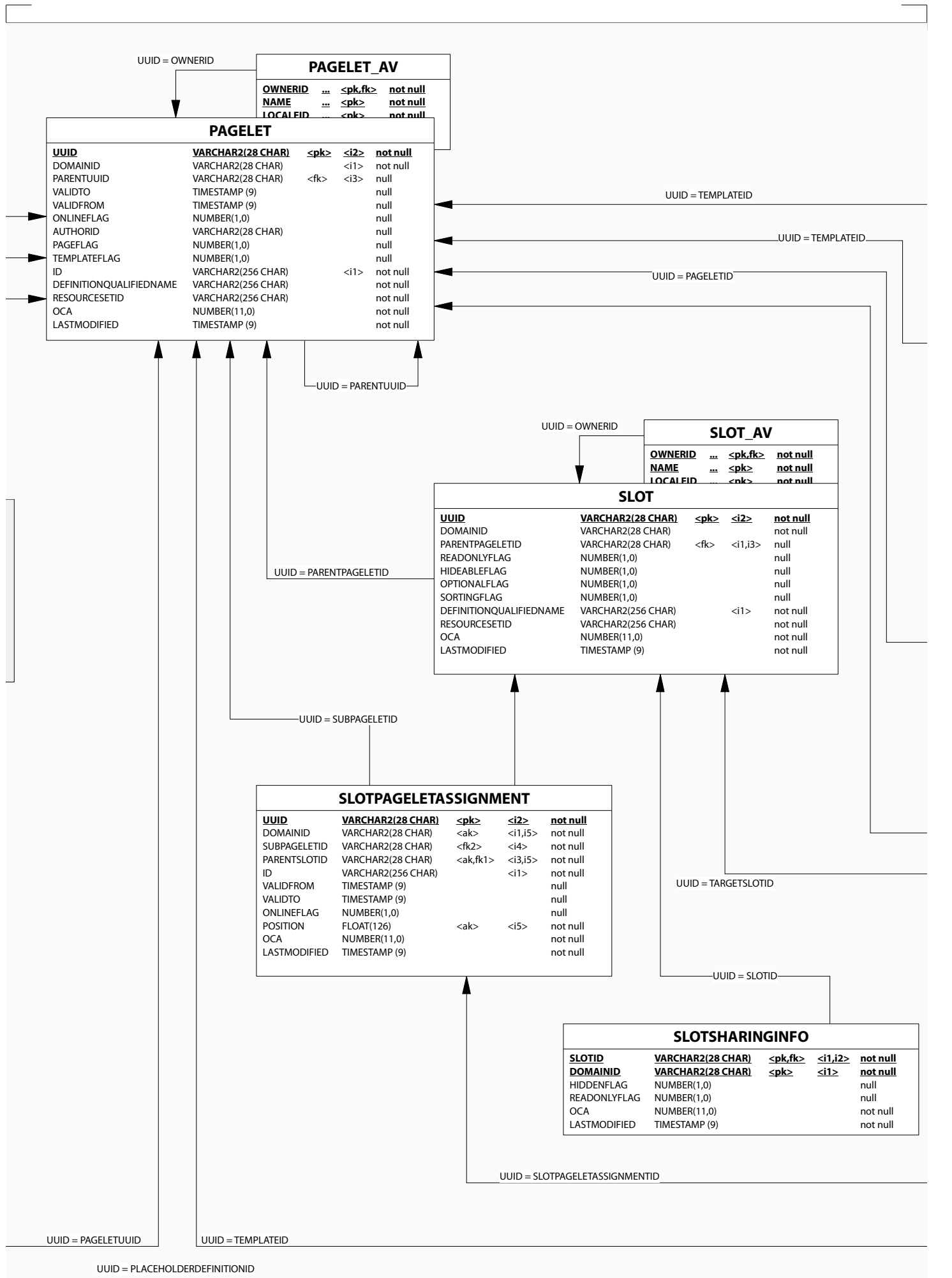
UUID = LABELUUID

PAGELETASSIGNMENTIMPORT

UUID	VARCHAR2(28 CHAR)	<pk>	<i>	not null
DOMAINID	VARCHAR2(28 CHAR)			not null
JOBUUID	VARCHAR2(28 CHAR)			not null
ASSIGNMENTID	VARCHAR2(28 CHAR)			not null
ENTRYPOINTTYPE	VARCHAR2(256 CHAR)			not null
OCA	NUMBER(11,0)			not null
LASTMODIFIED	TIMESTAMP (9)			not null

CONFIGURATIONPARAMETER

UUID	VARCHAR2(28 CHAR)	<pk>	<i2>	not null
DOMAINID	VARCHAR2(28 CHAR)			not null
CONFIGURATIONPARAMETERCTNRID	VARCHAR2(28 CHAR)		<i1,i3>	not null
DEFINITIONQUALIFIEDNAME	VARCHAR2(256 CHAR)		<i1>	not null
RESOURCESETID	VARCHAR2(256 CHAR)			not null
LOCALIZEDFLAG	NUMBER(1,0)			null
TYPE	NUMBER(11,0)			null
NAME	VARCHAR2(256 CHAR)			null
OCA	NUMBER(11,0)			not null
LASTMODIFIED	TIMESTAMP (9)			not null
ATTRIBUTES	CLOB		<i4>	null
ATTRIBUTES_DE_DE	CLOB		<i5>	null
ATTRIBUTES_EN_US	CLOB		<i6>	null



PLACEHOLDER_PARENT				
UUID	VARCHAR2(28 CHAR)	<pk>	<i1>	not null
DOMAINID	VARCHAR2(28 CHAR)			not null
TEMPLATEID	VARCHAR2(28 CHAR)	<fk1>	<i2>	not null
TARGETPLACEHOLDERDEFINITIONID	VARCHAR2(28 CHAR)	<fk2>	<i3>	null
PLACETARGETCONTENTONTOPFLAG	NUMBER(1,0)			null
HIDETARGETCONTENTFLAG	NUMBER(1,0)			null
OCA	NUMBER(11,0)			not null
LASTMODIFIED	TIMESTAMP (9)			not null

PLACEHOLDER_PPA				
UUID	VARCHAR2(28 CHAR)	<pk>	<i2>	not null
DOMAINID	VARCHAR2(28 CHAR)			not null
TEMPLATEID	VARCHAR2(28 CHAR)	<fk1>	<i3>	not null
TARGETPLACEHOLDERDEFINITIONID	VARCHAR2(28 CHAR)	<fk2>	<i1,i4>	null
PLACEHOLDERASSIGNMENTID	VARCHAR2(28 CHAR)	<fk3>	<i1,i5>	not null
PLACETARGETCONTENTONTOPFLAG	NUMBER(1,0)			null
HIDETARGETCONTENTFLAG	NUMBER(1,0)			null
OCA	NUMBER(11,0)			not null
LASTMODIFIED	TIMESTAMP (9)			not null

PLACEHOLDER_PA				
UUID	VARCHAR2(28 CHAR)	<pk>	<i2>	not null
DOMAINID	VARCHAR2(28 CHAR)	<ak>	<i1,i5>	not null
PAGELETID	VARCHAR2(28 CHAR)	<fk>	<i3>	not null
ID	VARCHAR2(256 CHAR)		<i1>	not null
PLACEHOLDERID	VARCHAR2(28 CHAR)	<ak>	<i4,i5>	not null
VALIDFROM	TIMESTAMP (9)			null
VALIDTO	TIMESTAMP (9)			null
ONLINEFLAG	NUMBER(1,0)			null
POSITION	FLOAT(126)	<ak>	<i5>	not null
OCA	NUMBER(11,0)			not null
LASTMODIFIED	TIMESTAMP (9)			not null

pagelet.template.assignment

PLACEHOLDERDEF				
UUID	VARCHAR2(28 CHAR)	<pk>	<i2>	not null
DOMAINID	VARCHAR2(28 CHAR)		<i1>	not null
TEMPLATEID	VARCHAR2(28 CHAR)	<fk2>	<i5>	not null
TARGETSLOTID	VARCHAR2(28 CHAR)	<fk1>	<i4>	null
DEFINITIONQUALIFIEDNAME	VARCHAR2(256 CHAR)			not null
RESOURCESETID	VARCHAR2(256 CHAR)			not null
ID	VARCHAR2(256 CHAR)		<i1>	not null
TARGETPLACEHOLDERID	VARCHAR2(28 CHAR)		<i3>	null
POSITION	FLOAT(126)			not null
OCA	NUMBER(11,0)			not null
LASTMODIFIED	TIMESTAMP (9)			not null

PLACEHOLDER_SPA				
UUID	VARCHAR2(28 CHAR)	<pk>	<i2>	not null
DOMAINID	VARCHAR2(28 CHAR)			not null
TEMPLATEID	VARCHAR2(28 CHAR)	<fk1>	<i3>	not null
TARGETPLACEHOLDERDEFINITIONID	VARCHAR2(28 CHAR)	<fk2>	<i1,i4>	null
SLOTPAGELETASSIGNMENTID	VARCHAR2(28 CHAR)	<fk3>	<i1,i5>	null
PLACETARGETCONTENTONTOPFLAG	NUMBER(1,0)			null
HIDETARGETCONTENTFLAG	NUMBER(1,0)			null
OCA	NUMBER(11,0)			not null
LASTMODIFIED	TIMESTAMP (9)			not null

PLACEHOLDERDEF_AV				
OWNERID	...	<pk,fk>	<i2>	not null
NAME	...	<pk>	<i1>	not null
LOCALEID	...	<pk>	<i3>	not null
...	...			null



